



We pioneer motion

NJ23-ILR-series cylindrical roller bearings with double the operating life

The new NJ23-ILR-series cylindrical roller bearings with an increased basic load rating and double the operating life.

In applications such as vibratory machinery and industrial gearboxes, for example, the basic dynamic load ratings of the bearing and increased strength characteristics of the cage play a particularly important role. Schaeffler has developed, tested, and validated the new NJ23-ILR design in order to meet these requirements. The new cylindrical roller bearings with an increased basic load rating replace the LSL range and part of the ZSL range of cylindrical roller bearings (bore code > 15) in the product portfolio.

- Highest basic dynamic load rating for your application
- Improved performance under mixed friction conditions and in cases of insufficient lubrication
- Proven MPAX cage
- Design based on the NJ23 series

SCHAEFFLER

NJ23-ILR-series cylindrical roller bearings with MPAX cage

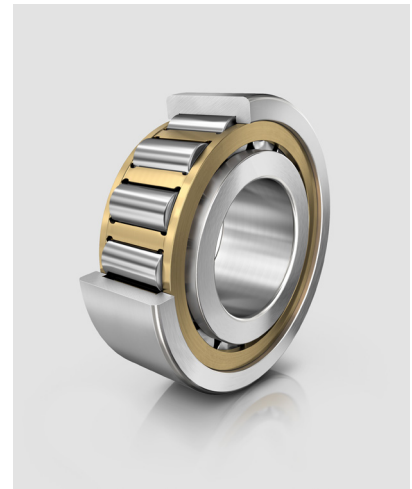
Special requirements in the application

- Highly loaded bearing positions on the high-speed shafts and intermediate shafts of industrial gearboxes
- Restricted installation space (trend toward downsizing and increased power density)
- High acceleration forces in vibratory machinery
- Increased operating life and basic load rating in applications

Our solution: the new NJ23-ILR series

- Design based on the NJ23 series
- Improved heat treatment and material and surface quality
- Increased performance under mixed friction conditions and in cases of insufficient lubrication
- Highest basic dynamic load rating on the market and double the operating life (average increase in the basic dynamic load rating of 24% based on basic type NJ23)
- Proven high-performance MPAX cage with enhanced strength characteristics for high-vibration applications
- Interchangeable in accordance with DIN 5412-1
- Optional Durotect B coating for rings and rollers provides increased protection against wear

With double the operating life, the new NJ23-ILR-series cylindrical roller bearings make a valuable contribution to reducing CO2 emissions.

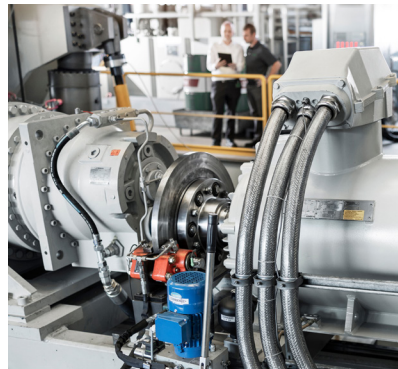


Overview

Design:	NJ
Series:	23
Bore Ø:	80 to 300 mm
Cage:	MPAX
Suffix :	ILR



Vibratory machinery



Industrial gearboxes



Soil compactors

Schaeffler Technologies AG & Co. KG

Georg-Schäfer-Straße 30
97421 Schweinfurt
Germany
www.schaeffler.com
info@schaeffler.com