

EWELLIX

EWELLIX Linear Actuators

CAMT

Product Data Sheet

We pioneer motion

SCHAEFFLER

1 EWELLIX linear actuator CAMT

EWELLIX linear actuator for operating tables and treatment chairs

1

1 CAMT



001CF1EF

Benefits

- play-free movement
- easy installation
- compact design

Standards

- IEC 60601-1
- IEC 60601-1-2

1 Technical data CAMT

Feature		CAMT20
Rated push force	N	6000
Rated pull force	N	6000
Static load (push/pull) ¹⁾	N	13200
Safety factor under load conditions ^{2) 3)}	-	4
Speed (full load ... no load) ⁴⁾	mm/s	5 to 6.5
Stroke S	mm	50 to 250
Voltage (DC)	V	24

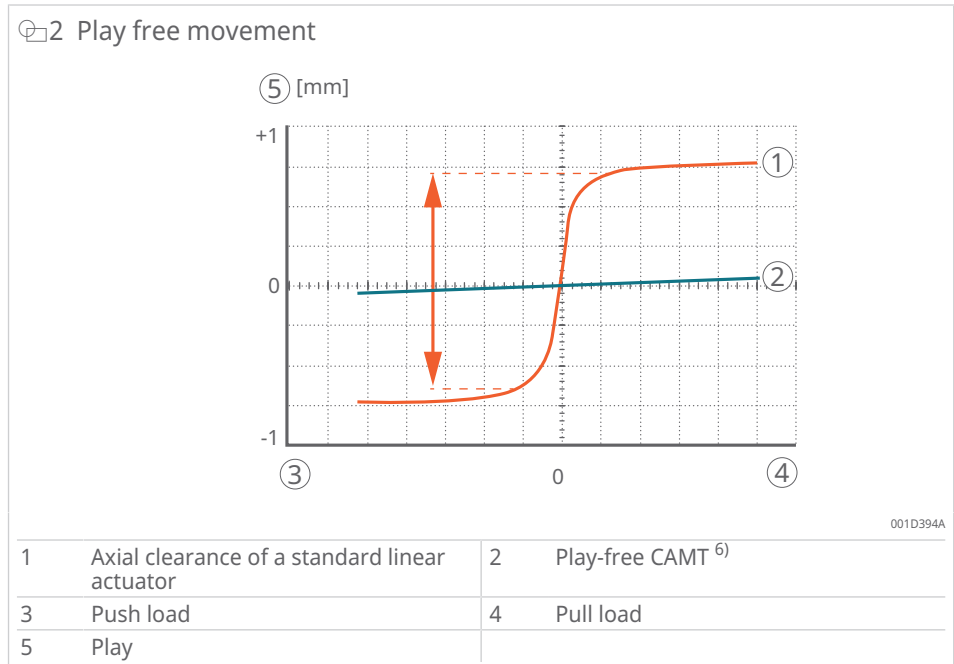
Feature		CAMT20
Current consumption	A	10
Duty cycle	%	10
Ambient temperature	°C	+10 to +40
Protection code (IP)	-	IP20
Mass ⁵⁾	kg	5.8

- 1) Safety factor against mechanical hazards according to IEC 60601-2-46
- 2) static safety factor in accordance with IEC 60601-1
- 3) Depending on the stroke, the push force is reduced. For further information, see the Safety factor under load conditions diagram.
- 4) Speed at DC 24 V; the speed with VCU and SCU is higher. For further information, see the Speed-load diagram.
- 5) for stroke S = 250 mm, without attachment

Product benefits

Play-free movement – enhanced comfort

Since all parts are play-free, the CAMT provides completely smooth movement. Unlike conventional linear actuators, which experience jerking during load changes, the CAMT performs a continuous movement.



Easy installation – completely straightforward

Thanks to the new design with additional front and rear attachment with 1 or 2 degrees-of-freedom in movement.

3 Front attachment: play-free



001CF1F1

4 Rear attachment: play-free

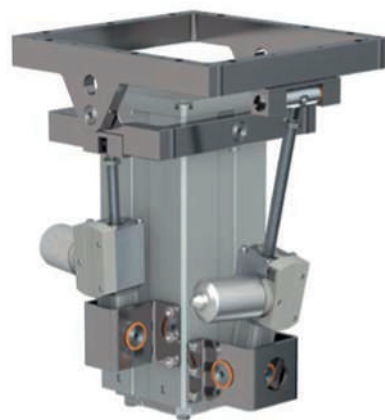


001CF1F2

Compact design – perfect system integration

The compact design simplifies system integration. It can be used as a single actuator or in combination with other actuators (CAMT or lifting column) to generate a combined movement

5 Lift modules and tilt modules for operating tables

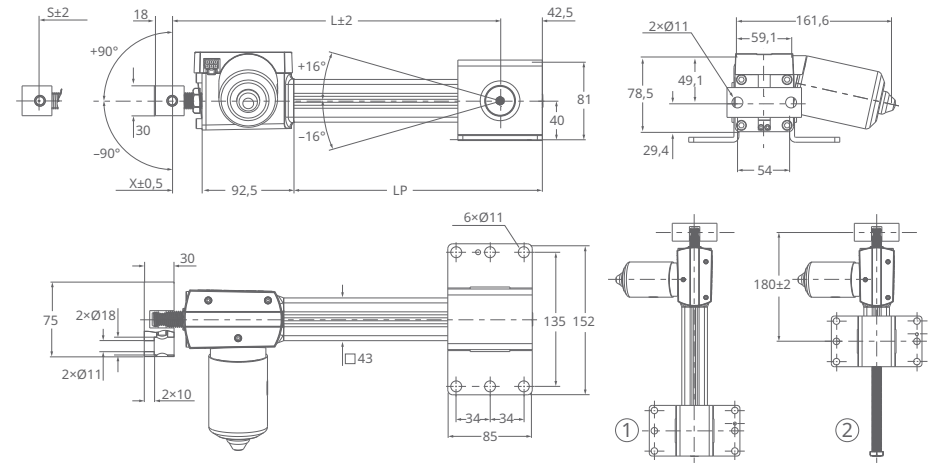


001CF1F6

Dimensional drawings

Connection with 1 degree-of-freedom (CAMT20-...-00...-BC-AF...-000)

6 Dimensions for attachment with 1 degree-of-freedom



001DC567

L	Retracted length	X	Offset
S	Stroke	LP	Protection tube length
1	Long protection tube	2	Short protection tube

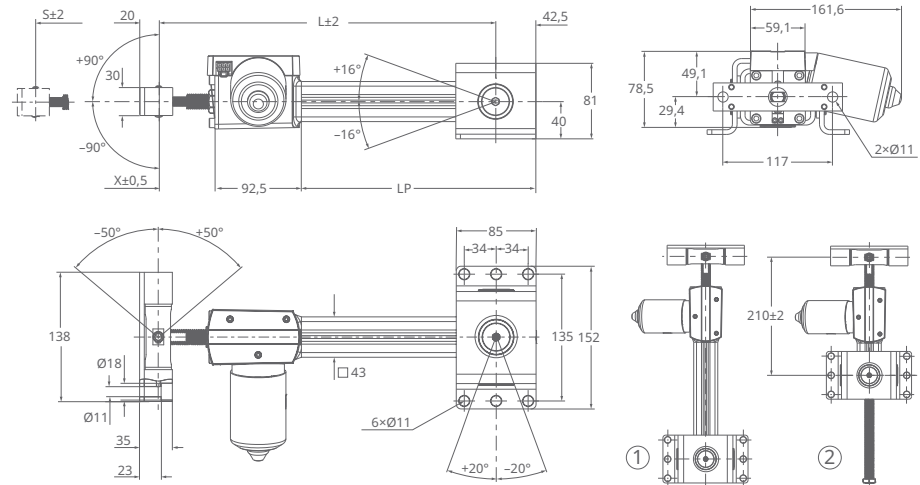
Long protection tube: $L = S + X + 50 \text{ mm}$

Short protection tube: $L = X + 150 \text{ mm}$

Standard offset: $X = 30 \text{ mm}$

Connection with 2 degrees-of-freedom (CAMT20-.-00.-CC-AF.-000)

7 Dimensions for attachment with 2 degrees-of-freedom



001DC577

L	Retracted length	X	Offset
S	Stroke	LP	Protection tube length
1	Long protection tube	2	Short protection tube

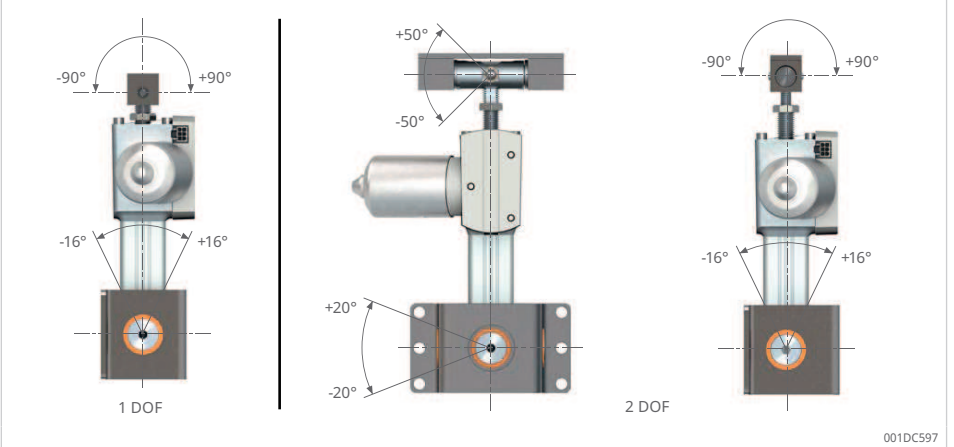
Long protection tube: $L = S + X + 50 \text{ mm}$

Short protection tube: $L = X + 150 \text{ mm}$

Standard offset: $X = 60 \text{ mm}$

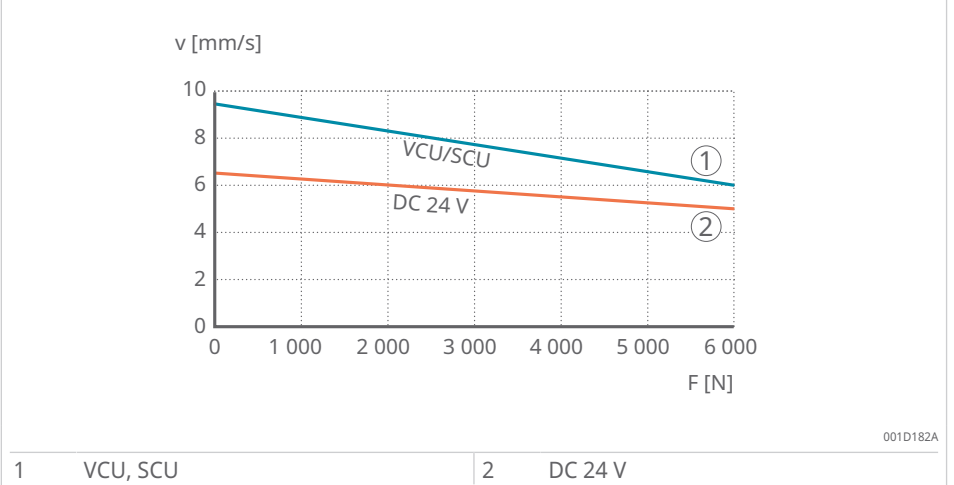
Angle of movement, play at front and rear attachment

8 Angle of movement at front and rear attachment

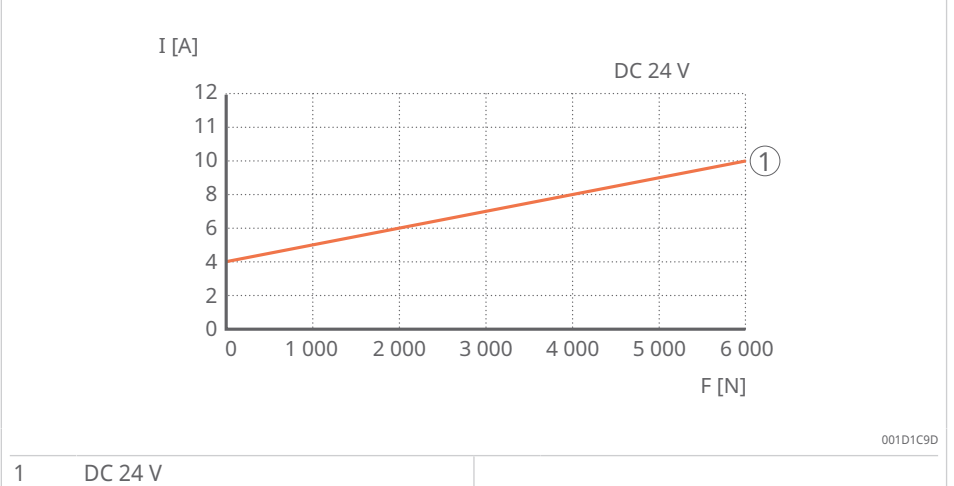


Performance diagrams

9 Speed-load diagram CAMT

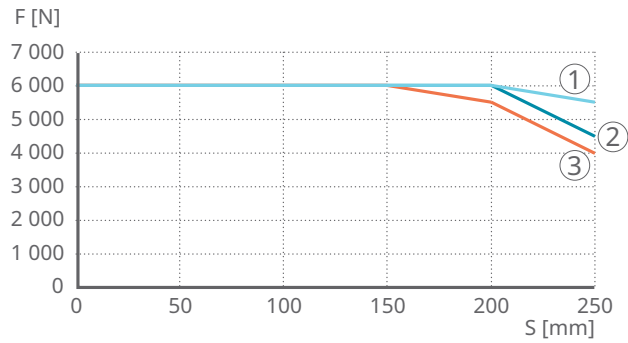


10 Current-load diagram CAMT



Load limit

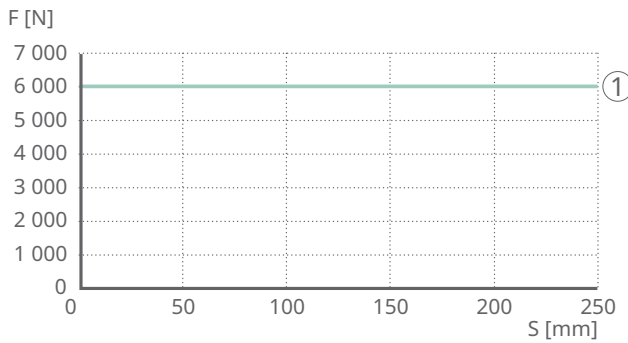
11 Push load limit with safety factor SF = 4 (IEC 60601-1)



001D1C9E

1	Attachment with 2 degrees-of-freedom, with long protection tube ⁷⁾	2	Clevis attachment
3	Attachment with 1 degree-of-freedom ^{7) 8)}		

12 Load limit (pull and push) with safety factor SF = 2.2 (IEC 60601-2-46)

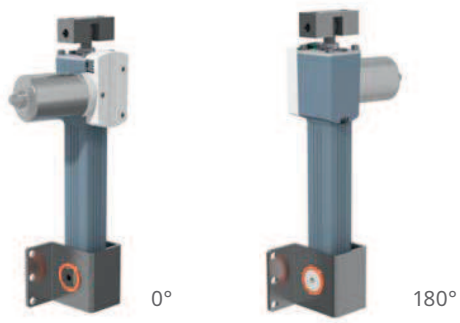


001D1CA1

1	CAMT
---	------

Orientation of rear attachment

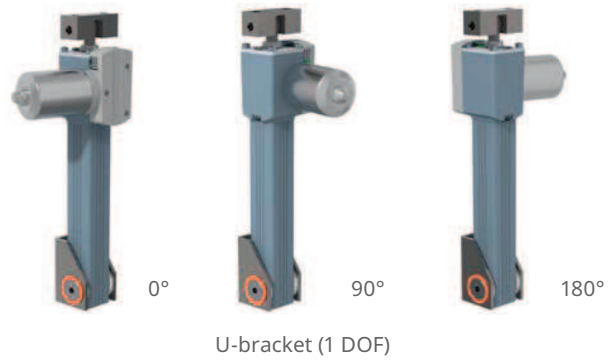
13 Standard bracket (1 degree-of-freedom and 2 degrees-of-freedom)



Standard bracket (1 DOF and 2 DOF)

001D38EB

14 U-bracket (1 degree-of-freedom)



001D38F9

Suitable control units and accessories

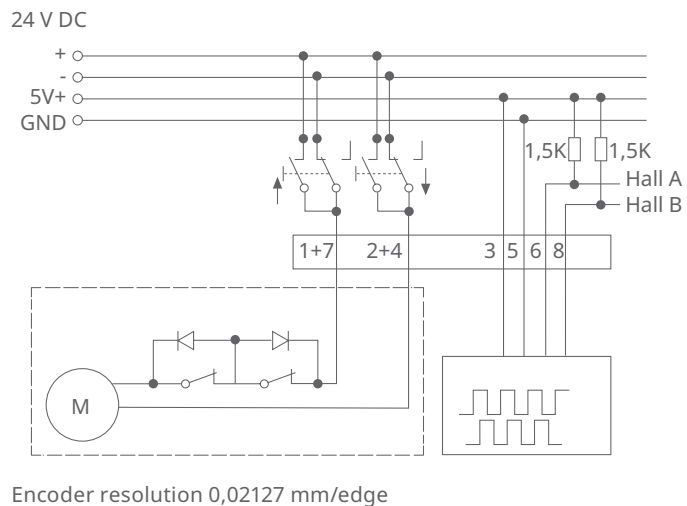
2 Suitable control units and accessories for CAMT

Operating device		Control units		
Designation	Switch	SCU1, SCU5, SCU9	VCU5, VCU8, VCU9	BCU5, BCU8
EHE1	M	✓	✓	✓
STJ	F	✓	✓	✓
STE	T	✓	✓	✓

- M Hand switch
- F Foot switch
- T Desk switch
- ✓ suitable
- not suitable

Wiring diagrams

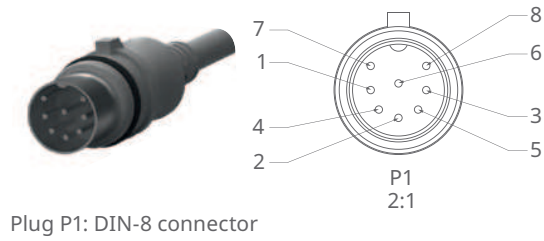
15 Connecting diagram CAMT



001D38AB

Electrical connection

16 Plug P1: DIN-8 plug



Plug P1: DIN-8 connector

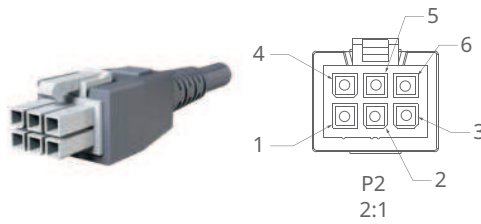
001D38BB

17 Open flying leads



001DD834

18 Plug P2: 6-pin Molex, Mini-Fit Jr. connector



Plug P2: Molex Mini-fit Jr. 6-pole

001D38DB

3 Electrical connection CAMT

Plug P1	Color	Cross-section	Function	Plug P2
1+7	Blue	AWG 16	- on, + off	4
2+4	Red	AWG 16	+ on, - off	1
3	Pink	AWG 24	+5 V	2
5	Gray	AWG 24	GND	5
6	Yellow	AWG 24	Hall sensor signal 1	3
8	Green	AWG 24	Hall sensor signal 2	6

Ordering key

19 Ordering designation CAMT

CAMT 2 0 - 050 00 - 00S - A A - A F A - ---

Type**Load**

2 6000 N

Voltage

0 DC 24 V

Stroke S

050 50 mm
 100 100 mm
 150 150 mm
 200 200 mm
 250 250 mm
 xxx Customized (10 mm increments), available on request¹⁾

**Distance between front attachment and gearbox
(offset "X", see dimensional drawing)**

00 Standard
 xx Customized (10 mm increments), available on request¹⁾

Protection tube length "LP", see dimensional drawing

00S Short (shortest possible length)
 00L Long (trapezoidal spindle covered in retracted position)
 xxx Customized (10 mm increments), available on request¹⁾

Front attachment

A Joint, D12 H7 bore
 B Attachment with 1 degree-of-freedom
 C Attachment with 2 degrees-of-freedom
 D Joint, D8 JS7 bore

Rear attachment

B Attachment with 1 degree-of-freedom 0°
 C Attachment with 2 degrees-of-freedom 0°
 E Attachment with 1 degree-of-freedom 180°, available on request
 F U-bracket attachment with 1 degree-of-freedom 0°, available on request
 G U-bracket attachment with 1 degree-of-freedom 90°, available on request
 H U-bracket attachment with 1 degree-of-freedom 180°, available on request
 I Attachment with 2 degrees-of-freedom 180°, available on request

Mechanical options

A Back-up nut

Electrical options

F End limit switch

Cable options

A 1 m, straight, with DIN-8 plug
 B 2.3 m, straight, with DIN-8 plug
 C 2.3 m, straight, with flying leads
 0 Without cable, available on request

¹⁾ Customized lengths must be clarified with the customer, as restrictions may apply due to varying application. Contact Schaeffler for further information.

Schaeffler Technologies AG & Co. KG

Georg-Schäfer-Straße 30

97421 Schweinfurt

Germany

www.schaeffler.de/en

info.de@schaeffler.com

In Germany:

Phone 0180 5003872

From other countries:

Phone +49 9721 91-0

All information has been carefully compiled and checked by us, but we cannot guarantee complete accuracy. We reserve the right to make corrections. Therefore, please always check whether more up-to-date or amended information is available. This publication supersedes all deviating information from older publications. Printing, including excerpts, is only permitted with our approval.
© Schaeffler Technologies AG & Co. KG
PDB 105 / 01 / en-US / 2026-05