



EWELLIX

## EWELLIX Lifting Columns

TXG

Product Data Sheet

We pioneer motion

**SCHAEFFLER**



# 1 TXG

1 TXG



001CF15B

## Benefits

- High-performance, high-speed lifting
- aesthetic design

## Standards

- IEC 60601-1

1 Technical data TXG

Feature	Unit	TXG10	TXG40, TXG50	TXG80, TXG90
Rated push force	N	1500	1500	1500
Rated pull force	N	0	0	0
Offset load	Nm	$\leq 210$ <sup>1)</sup>	$\leq 210$ <sup>1)</sup>	$\leq 210$ <sup>1)</sup>
Speed (full load to no load)	mm/s	17 ... 23	17 ... 23	17 ... 23
Lifting column version (number of guide tubes)	–	2-part	2-part	2-part
Stroke S	mm	200 ... 600	200 ... 600	200 ... 600
Retracted length L	mm	S + 180	S + 180	S + 180
Voltage	V	DC 24 V	AC 120 V	AC 230 V
Mains frequency	Hz	–	50 ... 60	50 ... 60
Current consumption	A	5	1.8	0.9
Duty cycle, intermittent operation	min	ON: 1 min / OFF: 9 min	ON: 1 min / OFF: 9 min	ON: 1 min / OFF: 9 min
Ambient temperature during operation	°C	+10 ... +40	+10 ... +40	+10 ... +40
	°F	+50 ... +104	+50 ... +104	+50 ... +104
Protection code (IP)	–	IP30	IP30	IP30
Protection class IEC 61140	–	III (SELV)	II / (I) <sup>2)</sup>	II / (I) <sup>2)</sup>
Type of actuation	–	Electrical	Electrical	Electrical
Mass	kg	8 ... 13	9 ... 14	9 ... 14

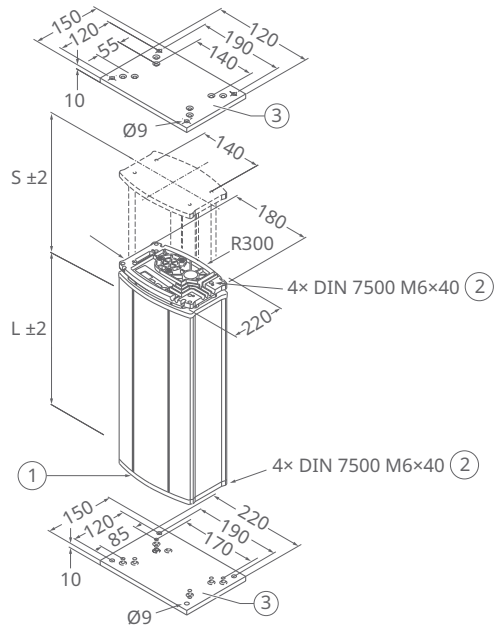
1) for details, see bending load diagram

2) mandatory for cable feed through

### Dimensional drawings

1

2 Dimensions TXG



001C31A5

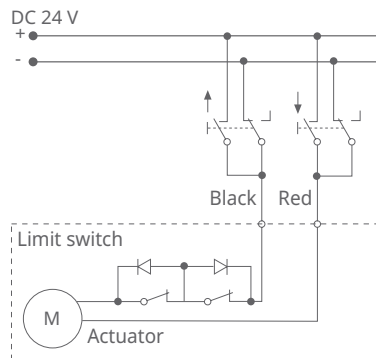
S	Stroke	L	Retracted length, without mounting plates
1	Base plate	2	Thread for fastening screws
3	Mounting plate, not included in scope of delivery		

Mounting plates are not included in the scope of delivery and are available separately as accessories.

Fastening screws are not included in the scope of delivery.

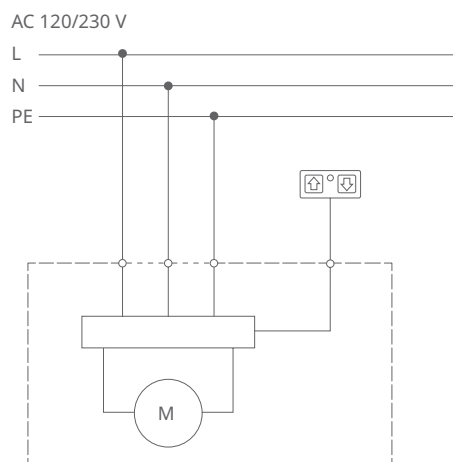
### Wiring diagrams

3 Connecting diagram DC 24 V



001DEE03

4 Connecting diagram AC 120 V, AC 230 V



001C319D

## Suitable control units and accessories

2 Suitable control units and operating elements for TXG10

Operating element		Control unit
Designation	Switch	COMPACT
HSM	T	✓
HSF	T	✓

T Desk switch

✓ suitable

3 Suitable operating elements for TXG40, TXG50, TXG80, TXG90

Operating element		Lifting columns (with integrated control unit)			
Designation	Switch	TXG40	TXG50	TXG80	TXG90
EHE1	M	✓	✓	✓	✓
STF	F	✓	✓	✓	✓
STA	T	✓	✓	✓	✓

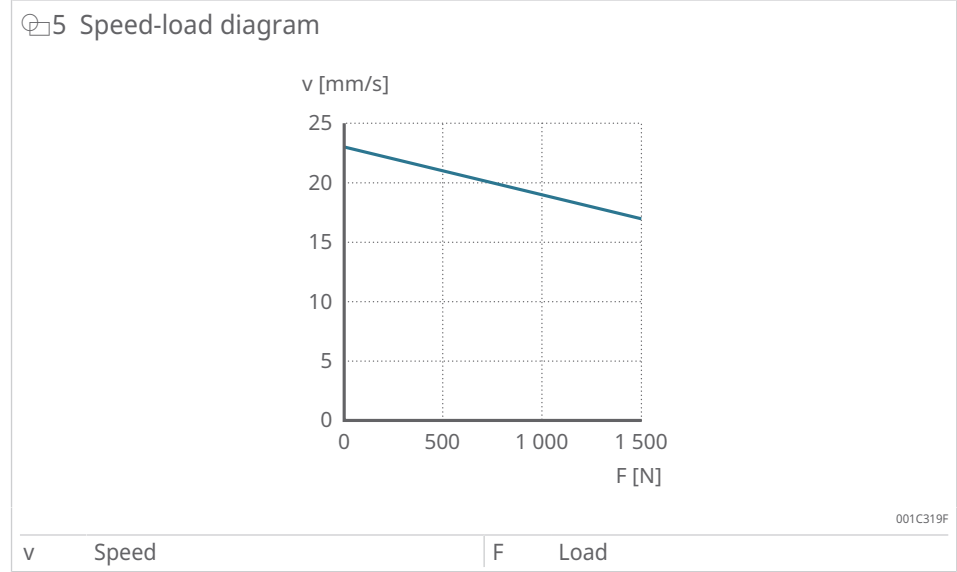
M Hand switch

F Foot switch

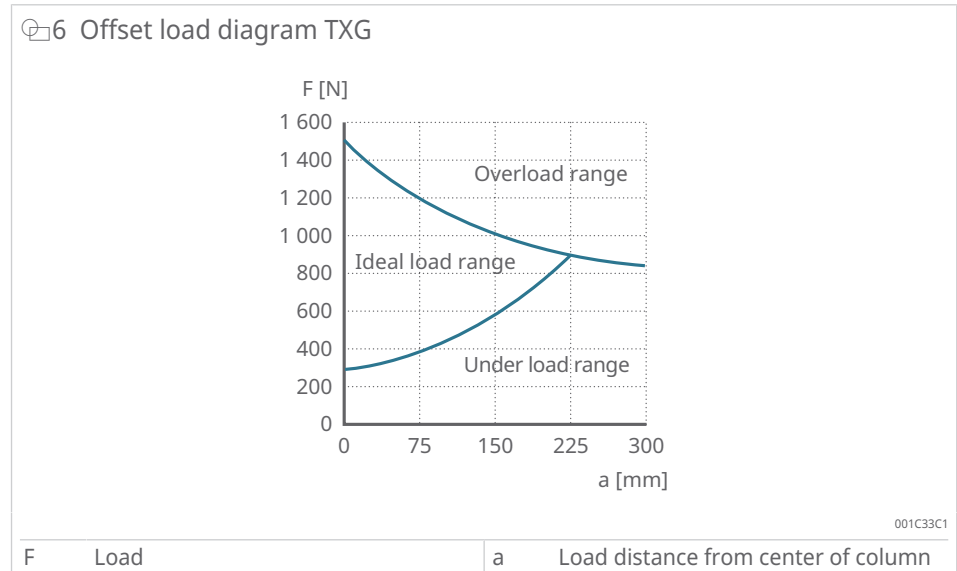
T Desk switch

✓ suitable

### Performance diagrams

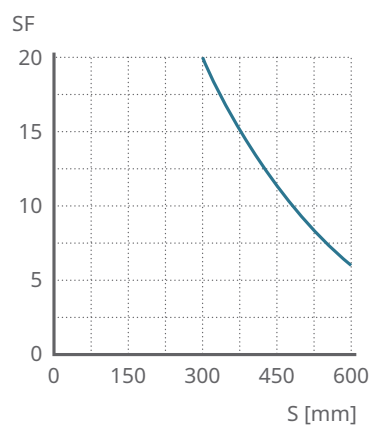


### Offset load diagrams



## Safety factor under load conditions

7 Safety factor under load conditions



001C31A3

SF Safety factor

S Stroke

## Accessories

### 4 Accessories

Designation	Plug	Country	Order number	
Mains cable, straight, 3 m	2-pin	Euro	General	0121730
Mains cable, straight, 3 m	3-pin	Schuko	General	0121729
Mains cable, straight, 3 m	3-pin	SEV	CH	0128699
Mains cable, straight, 3 m	2-pin	UL	USA	0126322
Mains cable, straight, 3 m	3-pin	UL	USA	0121762
Upper or lower mounting plate	-	-	-	0124874

## Ordering key

1

8 Ordering designation TXG

TXG 1 0 - 0 0 5 000 - 200 0 0

**Type**

**Voltage**

1	DC 24 V (slave actuator)
4	AC 120 V, 50/60 Hz, class II
5	AC 120 V, 50/60 Hz, class I, mandatory for cable feedthrough option
8	230 V AC, 50 Hz, class II
9	230 V AC, 50 Hz, class I mandatory for cable feedthrough option

**Color**

5	Natural anodized coating
---	--------------------------

**Option**

000	None
EYX	Control cable feed through
EYF	Mains cable feed through
EYS	Single Hall encoder for compact/slave use
2AA	Control cable feed through, mains cable feed through
EXG	Connection of TXG to BCU/VCU, available on request
KKK	Customized, available on request

**Stroke S for retracted length L=S+180 or L= S+160 mm**

L=S+180	L=S+160	
200	4CY	200 mm
300	4DY	300 mm
400	4EY	400 mm
500	4FY	500 mm
600	4GY	600 mm

001E0089



**Schaeffler Technologies AG & Co. KG**

Georg-Schäfer-Straße 30

97421 Schweinfurt

Germany

[www.schaeffler.de/en](http://www.schaeffler.de/en)

[info.de@schaeffler.com](mailto:info.de@schaeffler.com)

In Germany:

Phone 0180 5003872

From other countries:

Phone +49 9721 91-0

All information has been carefully compiled and checked by us, but we cannot guarantee complete accuracy. We reserve the right to make corrections. Therefore, please always check whether more up-to-date or amended information is available. This publication supersedes all deviating information from older publications. Printing, including excerpts, is only permitted with our approval.  
© Schaeffler Technologies AG & Co. KG  
PDB 103 / 01 / en-US / 2026-05