



EWELLIX

EWELLIX Lifting Columns

TLT

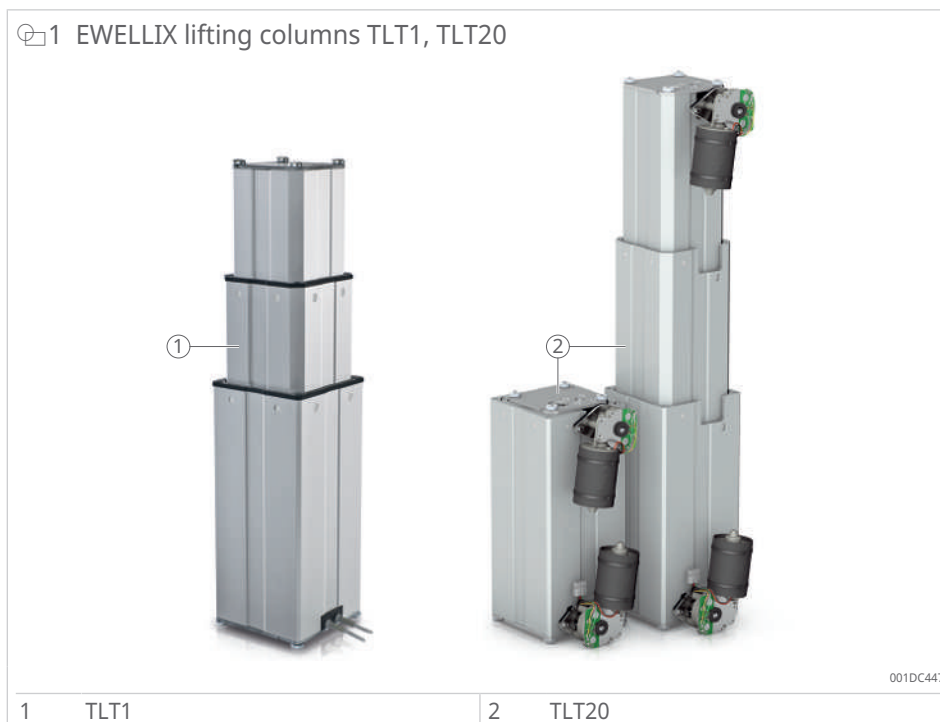
Product Data Sheet

We pioneer motion

SCHAEFFLER

1 TLT

1 EWELLIX lifting columns TLT1, TLT20



Benefits

- very small installation dimension
- high performance

Standards

- IEC 60601-1

1 Technical data TLT1

Feature	Unit	TLT10-A1	TLT10-A2	TLT10-B1	TLT10-C1	TLT10-C2
Rated push force	N	3000	4000	2000	1000	2000
Rated pull force	N	0	0	0	0	0
Offset load	Nm	≤ 400 ¹⁾	≤ 1000 ¹⁾	≤ 250 ¹⁾	≤ 110 ¹⁾	≤ 480 ¹⁾
Speed (full load to no load)	mm/s	11 to 16	13 to 19	13 to 19	25 to 36	25 to 42
Lifting column version (number of guide tubes)	-	3-piece	3-piece	3-piece	3-piece	3-piece
Stroke S	mm	300 to 700	300 to 700	300 to 700	300 to 700	300 to 700
Retracted length L	mm	S/2 + 170	S/2 + 240	S/2 + 170	S/2 + 170	S/2 + 240
Voltage	V DC	24	24	24	24	24
Power consumption	W	168	168	192	192	216
Current consumption	A	2 × 3.5	2 × 3.5	2 × 4.5	2 × 4.5	2 × 4.5
Duty cycle, intermittent operation	min	ON: 1 min / OFF: 9 min	ON: 1 min / OFF: 9 min	ON: 1 min / OFF: 9 min	ON: 1 min / OFF: 9 min	ON: 1 min / OFF: 9 min
Ambient temperature during operation	°C	+10 to +40	+10 to +40	+10 to +40	+10 to +40	+10 to +40
	°F	+50 to +104	+50 to +104	+50 to +104	+50 to +104	+50 to +104
Protection code (IP)	-	IP40	IP40	IP40	IP40	IP40
Protection class IEC 61140	-	SELV	SELV	SELV	SELV	SELV
Type of control	-	Electrical	Electrical	Electrical	Electrical	Electrical
Mass	kg	15 to 30	15 to 30	15 to 30	15 to 30	15 to 30

¹⁾ for details, see bending load diagram

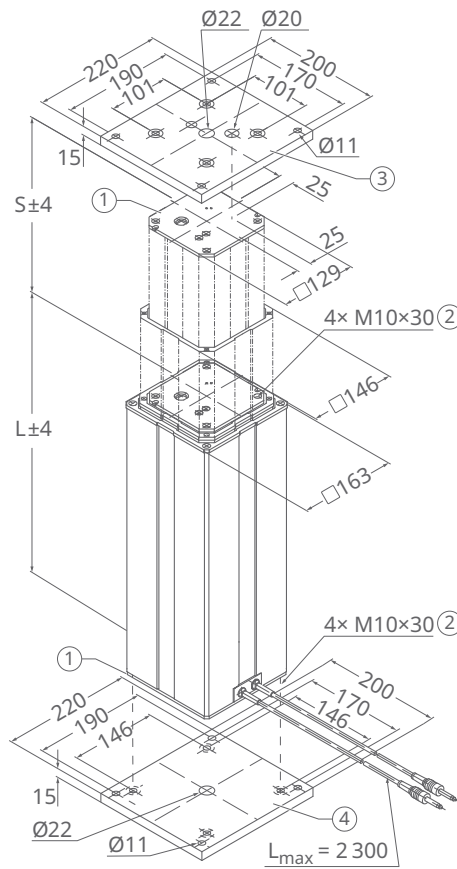
2 Technical data TLT20

Feature	Unit	TLT20-A3
Rated push force	N	5000
Rated pull force	N	0
Offset load	Nm	≤ 500 ²⁾
Speed (full load to no load)	mm/s	18 to 28
Lifting column version (number of guide tubes)	-	3-piece
Stroke S	mm	300 to 700
Retracted length L	mm	S/2 + 130
Voltage	V DC	24
Power consumption	W	312
Current consumption	A	2 × 6.5
Duty cycle, intermittent operation	min	ON: 1 min / OFF: 9 min
Ambient temperature during operation	°C	+10 to +40
	°F	+50 to +104
Protection code (IP)	-	IP00
Protection class IEC 61140	-	SELV
Type of control	-	Electrical
Mass	kg	15 to 30

²⁾ for details, see bending load diagram

Dimensional drawings

2 Dimensions TLT1



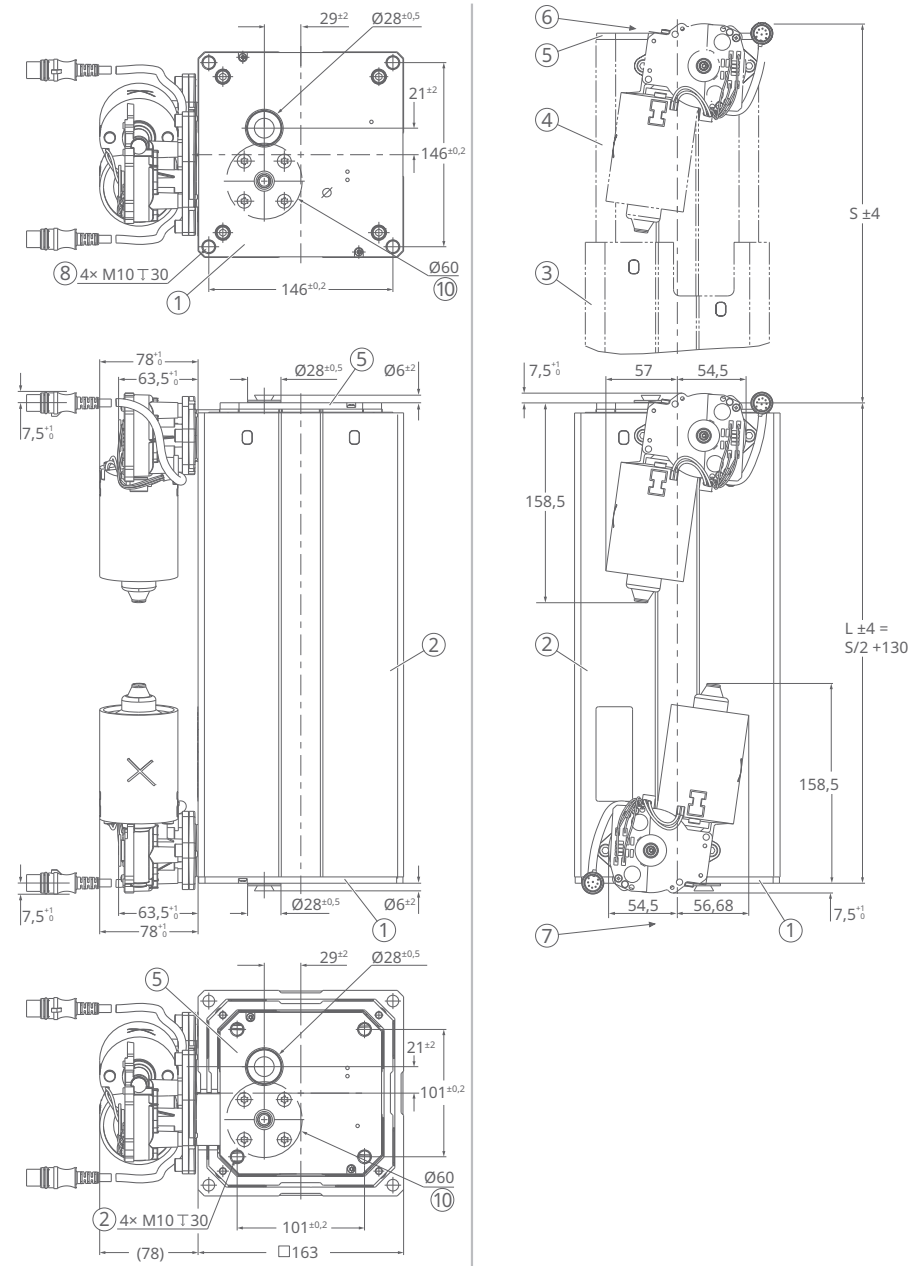
001D23F2

S	Stroke	L	Retracted length
1	Base plate	2	Thread for fastening screws
3	Upper mounting plate, not included in scope of delivery	4	Lower mounting plate, not included in scope of delivery

Mounting plates are not included in the scope of delivery and are available separately as accessories.

Fastening screws are not included in the scope of delivery and are available separately as accessories.

3 Dimensions TLT20



001DD9E6

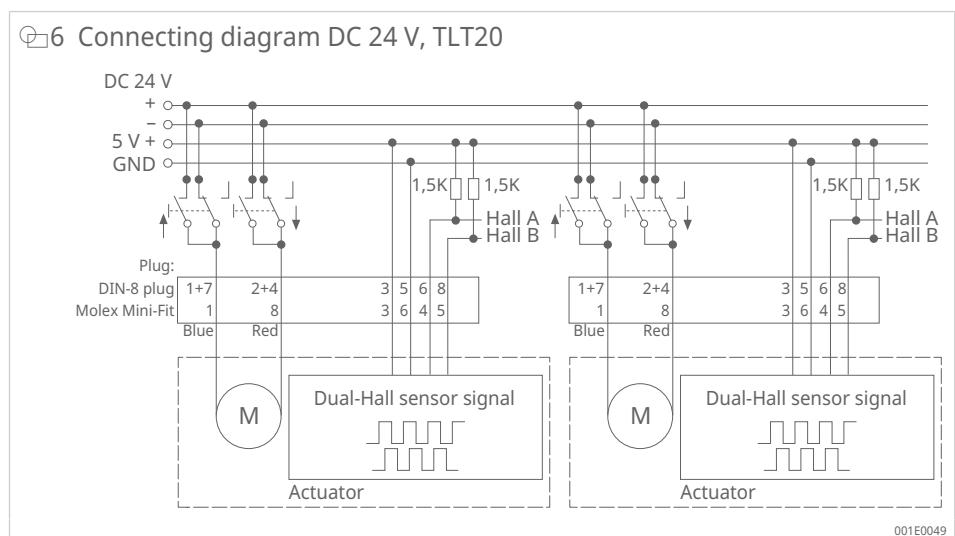
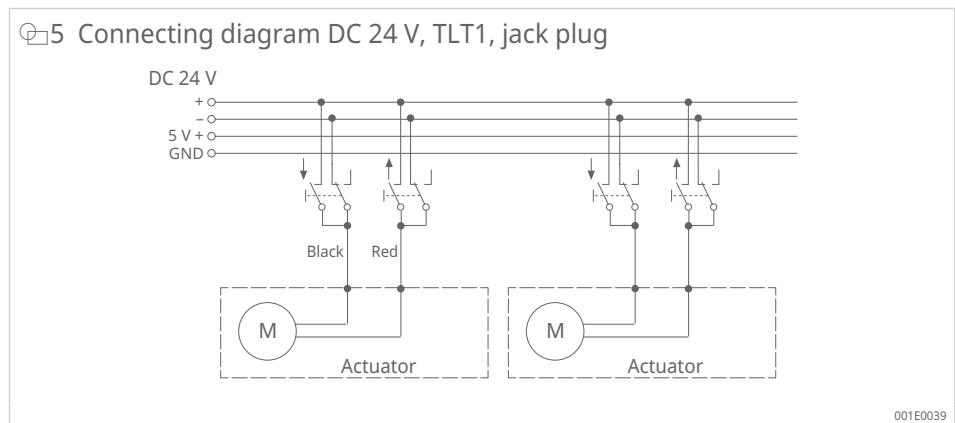
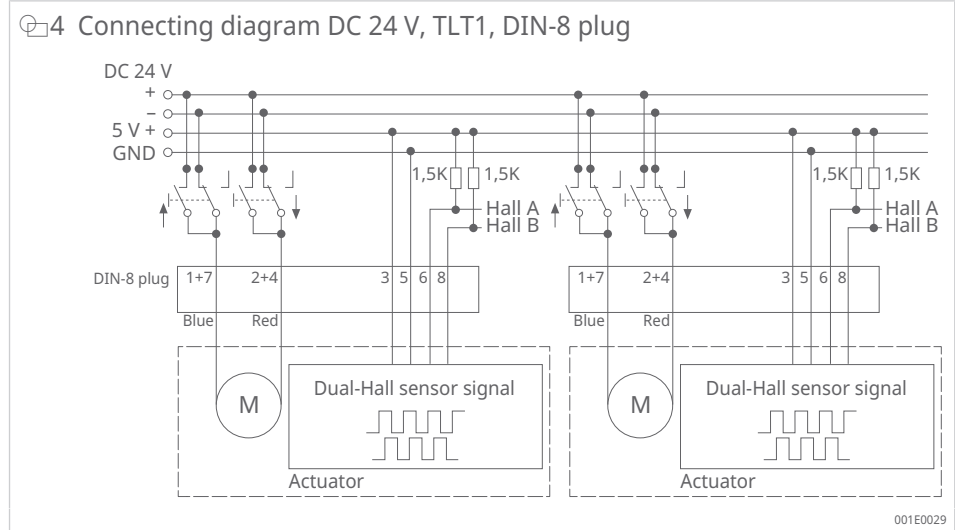
1	Outer tube base plate	2	Outer tube
3	Middle tube	4	Inner tube
5	Inner tube base plate	6	Upper mounting plate, optional (not shown)
7	Lower mounting plate, optional (not shown)	8	Transport screws/fastening screws
10	Area of force distribution (must be fully supported)		
S	Stroke	L	Retracted length

Mounting plates are not included in the scope of delivery and are available separately as accessories.

Fastening screws are not included in the scope of delivery and are available separately as accessories.

Wiring diagrams

The TLT1 connecting diagrams are only valid for TLT11. TLT10 must be operated with a BCU, MCU, SCU, or VCU control unit.



Suitable control units and accessories

3 Suitable control units and operating devices

Operating device		Control unit			
Designation	Switch	SCU	VCU	BCU	MCU
EHA1	M	-	-	-	✓
EHA3	M	✓	✓	✓	-
STF	F	-	-	-	✓
STJ	F	✓	✓	✓	-
STA	T	-	-	-	✓
STE	T	✓	✓	✓	-

M Hand switch
 F Foot switch
 T Desk switch
 ✓ suitable
 - not suitable

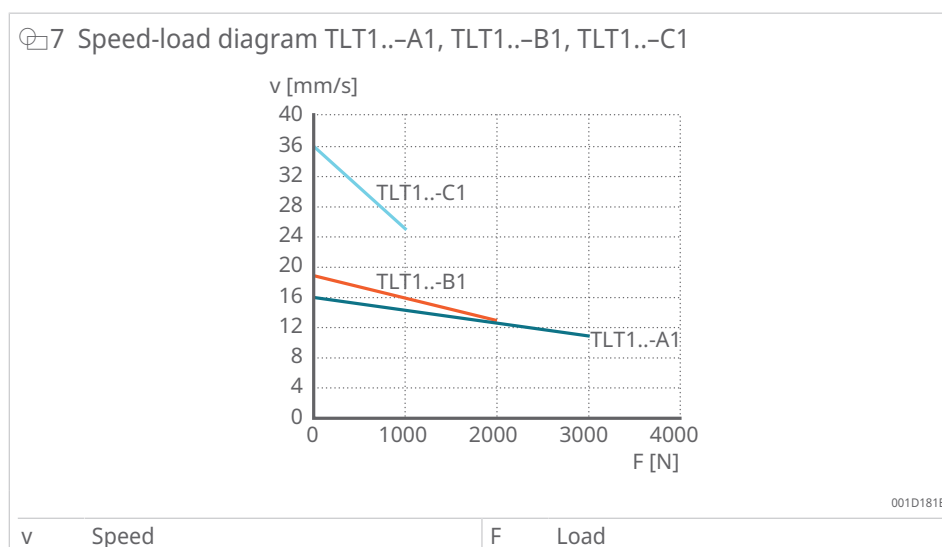
4 Suitable control units and operating devices for TLT20

Operating device		Control unit		
Designation	Switch	SCU1, SCU5, SCU9	VCU5, VCU8, VCU9	BCU5, BCU8
EHA3	M	✓	✓	✓
STJ	F	✓	✓	✓
STE	T	✓	✓	✓

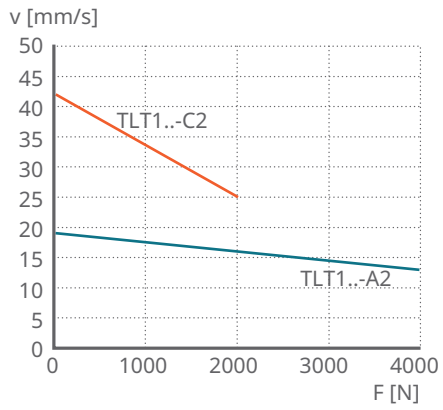
M Hand switch
 F Foot switch
 T Desk switch
 ✓ suitable
 - not suitable

Performance diagrams

7 Speed-load diagram TLT1..-A1, TLT1..-B1, TLT1..-C1



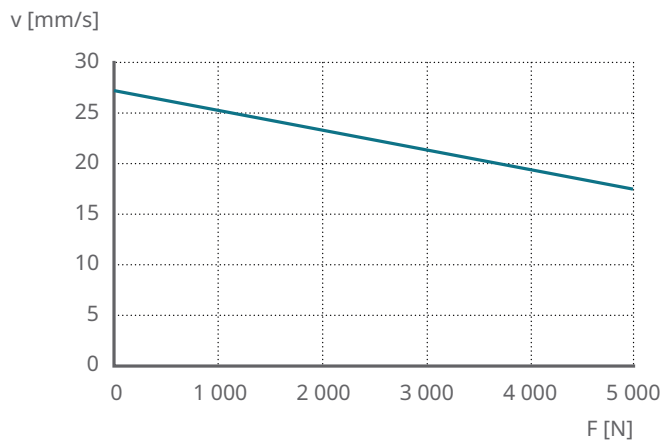
8 Speed-load diagram TLT1..-A2, TLT1..-C2



001D181E

v Speed | F Load

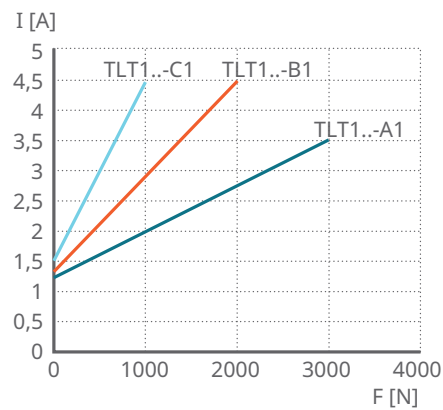
9 Speed-load diagram TLT20



001DD981

v Speed | F Load

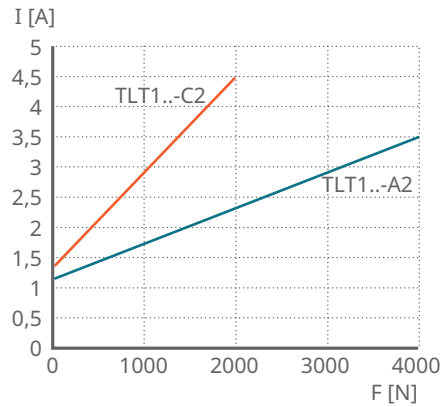
10 Current-load diagram TLT1..-A1, TLT1..-B1, TLT1..-C1



001D181D

I Current consumption | F Load

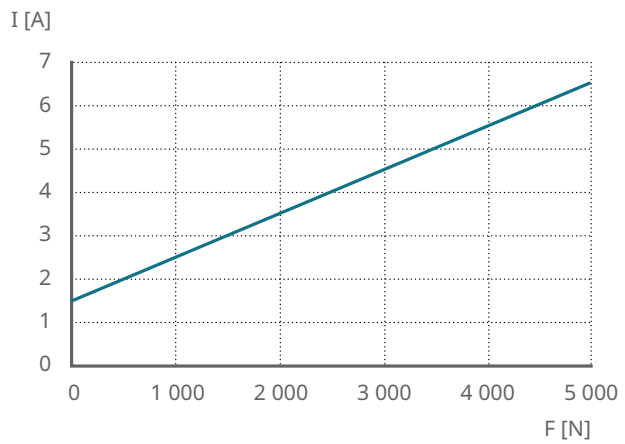
11 Current-load diagram TLT1..-A2, TLT1..-C2



001D181F

I	Current consumption	F	Load
---	---------------------	---	------

12 Current-load diagram TLT20

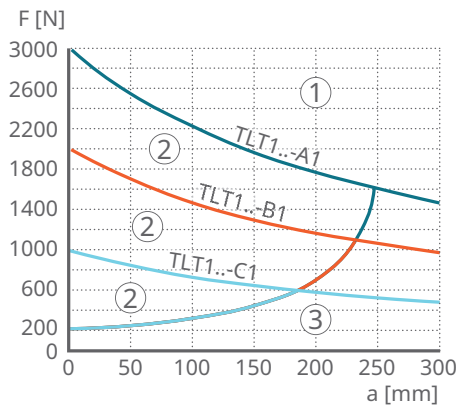


001DD986

I	Current consumption	F	Load
---	---------------------	---	------

Offset load diagrams

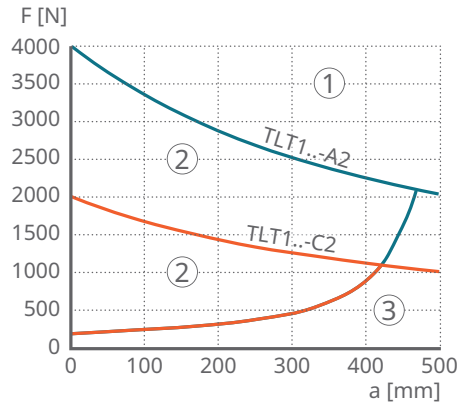
13 Offset load diagram TLT1..-A1, TLT1..-B1, TLT1..-C1



001D393F

F	Load	a	Load distance from center of column
1	Overload range	2	Ideal load range
3	Underload range		

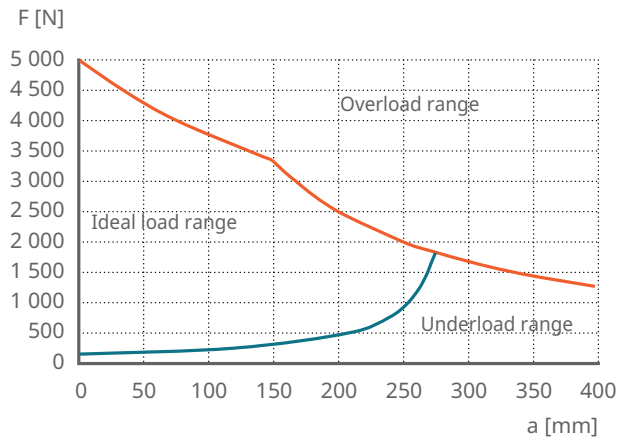
14 Offset load diagram TLT1..-A2, TLT1..-C2



001D3942

F	Load	a	Load distance from center of column
1	Overload range	2	Ideal load range
3	Underload range		

15 Offset load diagram TLT20



001E0079

F	Load	a	Load distance from center of column
---	------	---	-------------------------------------

Accessories

5 Accessories TLT

Accessories	Ordering designation	Order number
Upper mounting plate	ZPL-290268	0125624
Lower mounting plate	ZPL-290265	0125623
Fastening screw for mounting plate (4 screws/plate required)	ZBE-510707	0125360

Ordering key

16 Ordering designation TLT1

	TLT	1	0	A2	3	1	0	000
Type								
Voltage								
0								
1								
Load/speed								
A1								
A2								
B1								
C1								
C2								
Stroke S								
3								
4								
5								
6								
7								
Cable/connecting plug								
1								
2								
A								
3								
4								
B								
Option								
0								
A								
C								
D								
F								

001E0059

17 Ordering designation TLT20

TLT 2 0 - A3 3 D 0 - 000

Type

Voltage

0 DC 24 V, with 2 external motors

Load/speed

A3 5000 N / 20 mm/s

Stroke S

- 3 300 mm
- 4 400 mm
- 5 500 mm
- 6 600 mm, reduced safety factor
- 7 700 mm, reduced safety factor
- ... Additional versions available on request

Cable/connecting plug

- D Straight cable, 1.0 m, DIN-8 plug
- M Straight cable, 0.05 m, 8-pin Molex Mini-Fit plug

Option

- 0 No option
- F Dual Hall encoder

001E0069

Schaeffler Technologies AG & Co. KG

Georg-Schäfer-Straße 30

97421 Schweinfurt

Germany

www.schaeffler.de/en

info.de@schaeffler.com

In Germany:

Phone 0180 5003872

From other countries:

Phone +49 9721 91-0

All information has been carefully compiled and checked by us, but we cannot guarantee complete accuracy. We reserve the right to make corrections. Therefore, please always check whether more up-to-date or amended information is available. This publication supersedes all deviating information from older publications. Printing, including excerpts, is only permitted with our approval.
© Schaeffler Technologies AG & Co. KG
PDB 102 / 01 / en-US / 2026-05